



*...is all you need*



**6CH PROFESSIONAL CAR DSP  
+ ISO DIN PLUG & PLAY  
+ BLUETOOTH AUDIO POWERED**



## CONGRATULATIONS !

You now own an EXCURSION PXA Plug & Play Series DSP, the product of an uncompromising design and german engineering philosophy. A product made from Car Audio fanatics who truly believe in the relentless pursuit of perfection.

EXCURSION DSP & Amps are the result of several decades of product improvements, competition, innovation and highest quality parts and control standards in industry. When properly installed these products will provide you with many years of listening pleasure and are the perfect balance between high fidelity, extreme performance and long-lasting reliability.

Should your EXCURSION product ever need a service, Please record your information on the following lines to refer to in the event that you may need it later.

Dealer's Name \_\_\_\_\_

Date of Purchase \_\_\_\_\_

Installation Shop \_\_\_\_\_

Installation Date \_\_\_\_\_

At EXCURSION Intl. we are confident you will have many years of outstanding enjoyment from your high performance investment. For maximum performance we recommend that you have your new EXCURSION PXA DSP installed by an exclusive Authorized EXCURSION Dealer

To learn more about EXCURSION, please visit us on the World Wide Web at

<http://www.excursion.us>

### **CAUTION !**

Continuous exposure to sound pressure levels in excess of 100dB can cause permanent hearing loss. EXCURSION Products are capable of producing sound pressure levels well over 170dB. Please observe all local sound ordinances while listening to your EXCURSION System. EXCURSION Intl. accepts no liability for hearing loss, bodily injury, or property damage due to the result of use or misuse of this product.

## FEATURES

- ✓ Built-in 6CH professional Digital Audio Signal Processor
- ✓ Designed for OEM Upgrade via ISO DIN Plug & Play Connection. 4CH High Level + 2CH BT Input with Auto Turn ON/OFF function.
- ✓ 4CH sufficient Output Power easily drive origin OEM speaker.
- ✓ 6CH 4Volt PreOut via RCA harness for supply Car Audio Amplifier(s). REM OUT for Amplifier(s) Turn ON/OFF adjustable delay 0-10 Sec.
- ✓ BT-Audio Ready via optional available Bluetooth Dongle.
- ✓ BT-Audio Priority Mode. REM OUT/IN allow PXA P6 use as stand alone head unit or Motorcycle or Boat or other mobile audio fields.
- ✓ Lossless BT Audio SQ-Module Design using CSR, effect the audio signal route direct to DSP without modulation D/A to A/D for best resolution.
- ✓ FRD Chip Technology - 40hm stable. Four layer circuit board design.
- ✓ Intelligent protection circuit design: Short-circuit, Overload, High Temp.
- ✓ Professional PC tuning software with full function platform. „Run configuration wizard“ mode for rapid configuration, simply, clear.
- ✓ 3 different Setup Presets can be switched in real time instantly.
- ✓ Wireless full function Remote Controle. Synchronizing remote controle with smart phone player when smart phone Bluetooth plays music.
- ✓ On seperate purchase, according demand, PXI 6 (1.8m) or PXI 15 (4.5m) ISO DIN Plug to 20 POL wire harness ensure fast and easy OEM Plug installation of PXA P6. ISO DIN is the industrial standard in the OEM. A standard to meet most car Plug adaption or via another car specific to ISO Adapter. Therefor, according demand, PXI QLA (QuadLock Adapter) is one kind to OEM Plug most of the latest car models. Please ask your authorized EXCURSION retail specialist your fact car demand for easy Plug&Play install and purchase exact : „all you need“

**TECHNICAL SPECIFICATIONS**Power supply

Working voltage:	<b>PXA P6</b> DC8.5 -16V
Idling current:	0.32A
Standby current:	<2.5mA
Remote IN voltage:	9-16V
Remote OUT voltage:	DC12.8V(380mA)

Signal Processor

Distortion - THD @ 1 kHz, 1 VRMS Output:	0.02%
Bandwidth@ -3 dB:	20 ÷ 19.5K Hz
S/N ratio@ Aweighted(High level input):	97dB
Channel Separation@ 1 kHz:	80 dB
Input sensitivity (High Level):	600mV - 15V
Input impedance (High Level):	50Ω
Max Output Level(RMS) @ 0.1% THD:	4V

Input/output

High level:	4 Channel Max
Bluetooth input:	2 Channel Stereo
Line Output:	6 Channel Max
4 Ohm (Stereo) Power:	4x 30Wrms

Crossover

Filter type:	Full / HPF / LPF / BPF
--------------	------------------------

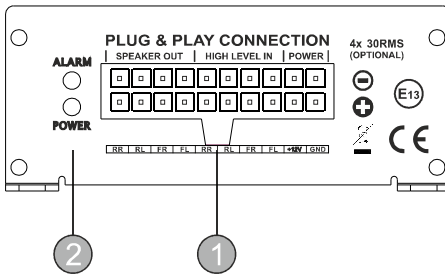
Filter mode and slope

Linkwitz:	12/24 dB
Butterworth:	6/12/18/24 dB
Crossover Frequency 70 steps:	10 ÷ 20K
Phase control:	0° / 180°

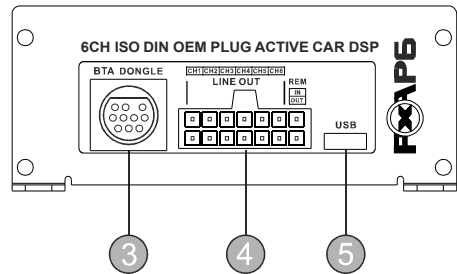
Size

L x W x H:	96x85x38mm
Weight:	0.45 KG

## FRONT PANEL LAYOUT



## REAR PANEL LAYOUT



### 1. 20 POL PLUG & PLAY CONNECTION

Matching dedicated ISO DIN Plug & Play harness for different cars. Makes sure that you connect your PXA P6 directly to your factory head unit while keeping origin status. On extra purchase you can choose suitable between PXI 6 (1,8m) and PXI (4,5m).

Caution: When connecting the dedicated harness, please check whether the line order of the wire harness is consistent with the original line sequence in order to avoid damage to other equipment.

### 2. ALARM (Protection Indicator)

The red ALARM LED indicator will light up and flash if there is fault presented like short circuit, overheat or under voltage protection. PXA P6 will stop working.

### 2. POWER (Working Indicator)

When PXA P6 turn on the blue indicator flashes three times and go into constant light state. After self-checked into normal working state, the blue working indicator is in constant light state.

### 3. BLUETHOOOTH INPUT

PXA P6 is Bluetooth Audio ready. On extra purchase PXI BTD Bluetooth Dongle the PXA P6 can receive stereo digital signals from Bluetooth Output Source. For BT Connection with BT Output Source the firmware password is saved : 8888

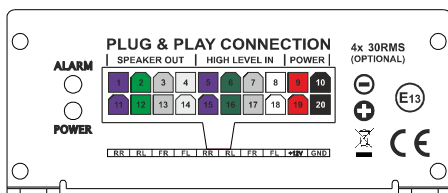
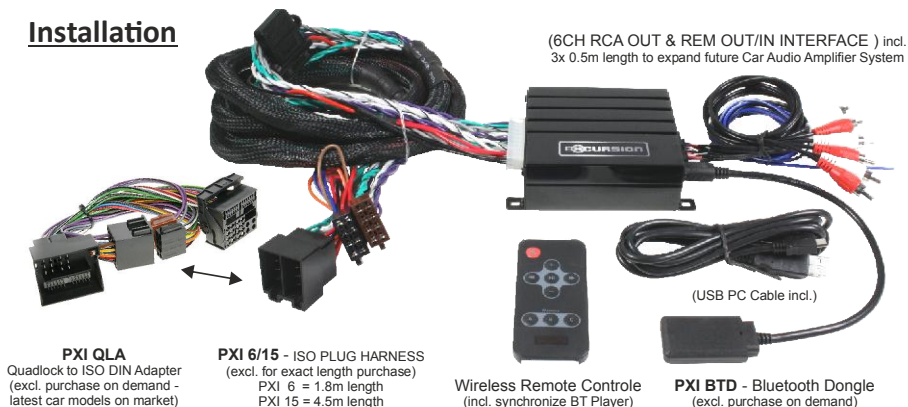
### 4. LINE OUT

Is provided with 6CH RCA Low Level signal Output. REM OUT to turn ON/OFF external amplifier. REM IN to turn ON/OFF PXA P6 if used as Head Unit device.

### 5. USB

Use USB cable from accessory to connect PC to PXA P6 to adjust 6CH DSP settings.

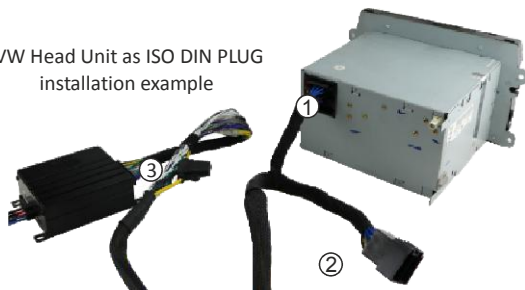
## Installation



- |   |  |
|---|--|
| 1. Loudspeaker output real right (-)            | 11. Loudspeaker output real right (+)            |
| 2. Loudspeaker output real left (-)             | 12. Loudspeaker output real left (+)             |
| 3. Loudspeaker output front right (-)           | 13. Loudspeaker output front right (+)           |
| 4. Loudspeaker output front left (-)            | 14. Loudspeaker output front left (+)            |
| 5. High-level loudspeaker input real right (-)  | 15. High-level loudspeaker input real right (+)  |
| 6. High-level loudspeaker input real left (-)   | 16. High-level loudspeaker input real left (+)   |
| 7. High-level loudspeaker input front right (-) | 17. High-level loudspeaker input front right (+) |
| 8. High-level loudspeaker input front left (-)  | 18. High-level loudspeaker input front left (+)  |
| 9. Power supply +12V                            | 19. Power supply +12V                            |
| 10. Ground                                      | 20. Ground                                       |

## PXA P6 - ISO DIN OEM PLUG CONNECTION INSTRUCTION

VW Head Unit as ISO DIN PLUG installation example

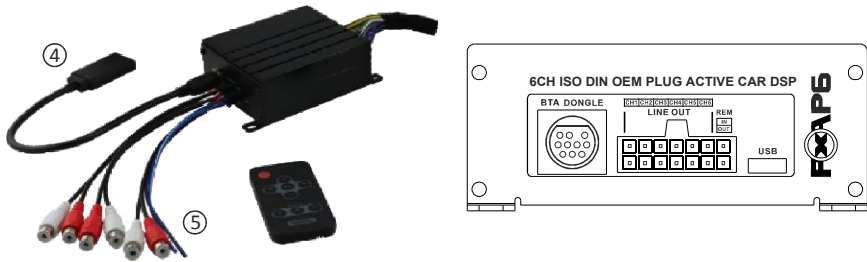


Attention:

If you car does not meet ISO DIN or Quadlock standard please ask your local authorized EXCURSION purchase retailer about your individuell OEM car standard for easy OEM Plug Installation of your PXA Series product.

- ① These Plugs are used to connect the OEM car spaker and Power Supply to Headunit wire socket.
- ② Female jack is inserted into ISO Plugs for Speaker & Power of the car. Former inserted to Headunit.
- ③ The 20Pol plug of PXI 6 or PXI 15 harness is inserted into the corresponding jack of the PXA P6

## PXA P6 - BLUETOOTH/LOW LEVEL SIGNAL CONNECTION INSTRUCTION



- ④ Bluetooth stereo signal input terminal is to connect to our dedicated BT-3.  
The interface adopts fool-proof design. Please pay attention to its direction when install it.
- ⑤ Low Level signal input terminal. Convenient for future expansion and upgrading.

## EXCURSION PXA DSP SOFTWARE DESCRIPTION

### **1. Software download and installation instructions:**

Download PXA DSP Software from official EXCURSION website: [www.excursion.us](http://www.excursion.us)  
Follow hint complete installation and double click the shortcut icon to start operation.

As shown :



### **2. Precautions for software installation:**

Please download & install PXA DSP Software first before connect PXA P6 to PC.  
Software works on Windows Operation System PC with following configuration:

OS : Windows XP / Windows VISTA / Windows 7 / Windows 8 / Windows 10  
CPU : 1.6 GHZ minimum  
Memory : 1 GB minimum  
Hard Disk : 512 MB minimum  
Graphic Card : 1280\*768 pixel resolution minimum

Note: Windows 7, VISTA, XP require installation of Microsoft Net Framework 4 tool  
before installation PXA DSP Software to the PC = [dotNetFx40\\_Full\\_x86\\_x64](#)

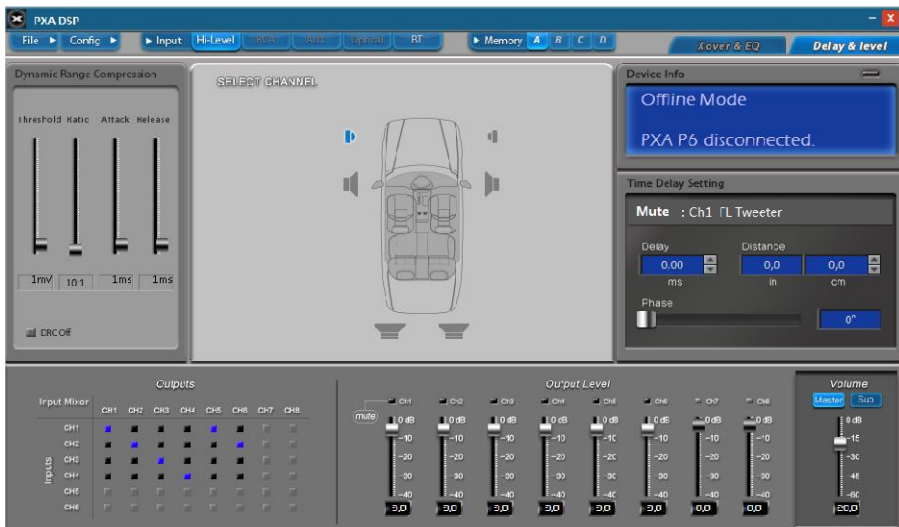
## 3. Introduction PXA DSP Software main interface:

PXA DSP tuning software has 2 main tuning control interfaces:

A) X-over and Equalizer Setup (default access after start software)



B) Time Delay and Level Setup







## EXCURSION LIMITED WARRANTY POLICY

EXCURSION Intl. offers limited warranty on EXCURSION products under normal use on the following terms:

**EXCURSION DSP & Amplifier are to be free of defects in material & workmanship for a period of one year.**

This warranty applies only to EXCURSION products sold to consumers by Authorized EXCURSION Dealers in Germany. Products purchased by consumers from an EXCURSION dealer in another country are covered only by that country's Distributor and not by EXCURSION Intl.

This warranty covers only the original purchaser of EXCURSION product. In order to receive service, the purchaser must provide EXCURSION with the receipt stating the consumer name, dealer, product and date of purchase.

Products found to be defective during the warranty period will be repaired or replaced (with a product deemed to be equivalent) at Excursion`s discretion and will not be liable for incidental or consequential damages. EXCURSION will not warranty this product under the following situations:

- \* **DSP and Amplifiers received with apparent rust or corrosion**
- \* **Any evidence of liquid damage or exposure to excessive heat**
- \* **Attempted repairs or alterations of any nature**
- \* **Product that has not been installed according to this owner manual**

Any implied warranties including warranties of fitness for use and merchantability are limited in duration to the period of the express warranty set forth above. No person is authorized to assume for EXCURSION any other liability in connection with the sale of this product.

**Please call prior your authorized EXCURSION dealer** the product got purchased. In case they are not accessible call 0961-416-0420 for EXCURSION Customer Service. You must obtain an RA# (Return Authorization Number) to return any product to EXCURSION Intl. The RA number must be prominently marked on the outside of the shipping carton or the delivery will be refused. Please pack your return carefully! We are not responsible for items damaged in shipping. Return the defective product along with a copy of the original dated retail sales receipt, plus 10,- EUR for handling and diagnostic evaluation to:

**EXCURSION Intl. - A Division of CHPW**  
**Attn: Returns (RA# ..... )**  
**Neustaedter Str. 20**  
**D-92685 Floss / Germany**



*...is all you need*

**EXCURSION - A Division of CHPW**

All Rights reserved - Intl. Trademark No: 010 640 597

Friedrich-Ebert-Str. 42 - D-92637 Weiden / Germany  
Tel: (+49) 961-416 04 20 - Fax: (+49) 961-46 04 41

